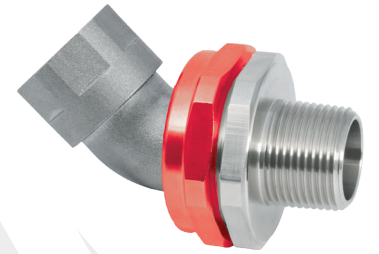


# PX784REX

**PX784REX 45° UNION, GLOBALLY APPROVED, EXPLOSIVE ATMOSPHERE BARRIER CABLE / CONDUIT ACCESSORY**

- RapidEx liquid pour sealing system
  - Enhances reliability, reduces risk
  - Reduces man hours
  - Reduces cost
- Allows the connection of conduit or glands to equipment
- Suitable for rigid or flexible conduit
- Integral coupling eliminates the need to rotate the conduit
- General purpose / industrial version available
- Equipment interface 'O' ring seal available
- -60°C to +85°C
- Globally marked, IECEx, ATEX & cCSAus



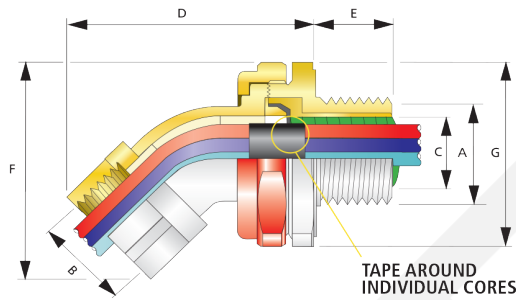
**IP66**  
+85 °C  
↑  
-60 °C

**Ex eb Ex db Ex ta**

### TECHNICAL CLASSIFICATION

DESIGN SPECIFICATION	BS 6121:Part 1:1989
ENCLOSURE PROTECTION	IK10 to IEC 62262 (20 joules) Brass & Stainless Steel only
INGRESS PROTECTION RATING**	IP66
AVAILABLE MATERIALS	Brass (standard), Electroless Nickel Plated Brass, Aluminium, Stainless Steel

\*\* When CMP installation accessories are used. Refer to [www.cmp-products.com](http://www.cmp-products.com) for further information.



### GLOBAL PRODUCT CERTIFICATION

ATEX CERTIFICATE	CML18ATEX1329U	IECEx CERTIFICATE	IECEx CML 18.0186U
CODE OF PROTECTION	Ⓜ II 2G TD Ex db IIC Gb, Ex eb IIC Gb, Ex ta IIIC Da Ⓜ I M2 Ex db I Mb, Ex eb I Mb	CODE OF PROTECTION	Ex db IIC Gb, Ex eb IIC Gb, Ex ta IIIC Da, Ex db I Mb, Ex eb I Mb
COMPLIANCE STANDARDS	EN 60079-0,1,7,31	COMPLIANCE STANDARDS	IEC 60079-0,1,7,31
cCSAus CERTIFICATE (2016-100)	1055233		
CODE OF PROTECTION	Class I, Div 1 & 2, Groups A, B, C, D; Enclosure type 4X: Class I, Zone 1, AEx de II; Ex de II		
COMPLIANCE STANDARDS	C22.2 No.0,0.5,30,94, CAN/CSA 60079-0,1,7, CAN/CSA E61241-1-1, UL Std 50, 1203, UL 60079-0,1,7		
EAC CERTIFICATE	TC RU C-GB.AA87.B.00487	INMETRO APPROVAL	TUV 12.1334U
NEPSI CERTIFICATE	GY18.1254U	RETIE APPROVAL	03866
UKr:SEPRO	CL 19.0370U	CCOE / PESO (INDIA) CERTIFICATE	P444949
MARINE APPROVALS	LRS: 01/00173	ECAS CERTIFICATE	20-02-05274

Male-to-Male thread option available.

Available with an equipment interface 'O' ring seal. For such options please add the suffix letter "R" after the type number in the ordering reference above, e.g. PX784REXDM2M2R.

For epoxy compound version please remove "REX" from ordering reference.

If 2 separate enclosures are required to be connected together please contact CMP Products.

PATENT GRANTED: ES2287986, NO 2287986, TR 2287986, AU 2010284848, AU 2014274614, GB 2485114, SG 178839, US 8872027, US 9484133, US 9774178, MY 153843, US 10193321, US 1034078

### PRODUCT SELECTION TABLE

ORDERING REFERENCE (BRASS, METRIC)	METRIC			ORDERING REFERENCE (BRASS, NPT)	NPT			DIAMETER OVER CORES "C"	NUMBER OF CORES	MAX PROTRUSION LENGTH "D"	MAX OVERHANG LENGTH "E"	ACROSS FLATS HEX "G"	ACROSS CORNERS Ø "G"	INSTALLATION TORQUE (NM)
	MALE FORWARD THREAD SIZE "A"	MINIMUM THREAD LENGTH "E"	FEMALE REAR THREAD SIZE "B"		MALE FORWARD NPT THREAD SIZE "A"	MINIMUM NPT THREAD LENGTH "E" (IN)	FEMALE REAR THREAD SIZE "B"							
PX784REXDM2M2	M20 X 1.5	15.0	M20 X 1.5	PX784REXDT1T1	½"	0.79	½"	12.6	21	60.6	55.8	46.0	50.6	7
PX784REXDM3M3	M25 X 1.5	15.0	M25 X 1.5	PX784REXDT2T2	¾"	0.80	¾"	17.5	30	65.9	61.2	50.0	55.0	10
PX784REXDM4M4	M32 X 1.5	15.0	M32 X 1.5	PX784REXDT3T3	1"	0.98	1"	23.6	50	69.5	70.2	60.0	66.0	15
PX784REXDM5M5	M40 X 1.5	15.0	M40 X 1.5	PX784REXDT4T4	1¼"	1.01	1¼"	30.0	59	74.9	76.4	65.0	71.5	25
PX784REXDM6M6	M50 X 1.5	15.0	M50 X 1.5	PX784REXDT5T5	1½"	1.03	1½"	41.0	115	93.5	88.0	75.0	82.5	30
PX784REXDM7M7	M63 X 1.5	15.0	M63 X 1.5	PX784REXDT6T6	2"	1.06	2"	53.7	115	102.7	103.4	90.2	99.2	45

All dimensions shown are in millimetres unless otherwise stated

For material options please add the following suffix to the Ordering Reference; Brass (no suffix required), Nickel Plated Brass "5", 316 Grade Stainless Steel "4", Copper Free Aluminium "1"