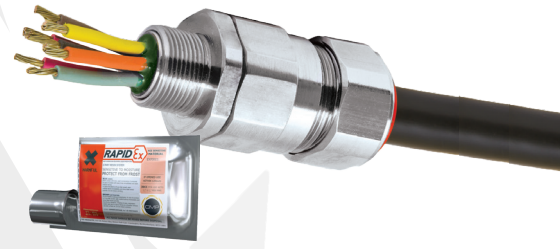








PX2KWREX

PX2KWREX GLOBALLY APPROVED, EXPLOSIVE ATMOSPHERE RAPIDEX BARRIER CABLE GLAND

FOR ALL TYPES OF STEEL & ALUMINIUM WIRE ARMoured CABLES

- RapidEx liquid pour sealing system
 - Enhances reliability, reduces risk
 - Reduces man hours
 - Reduces cost
- Metal-to-metal armour clamping
- Direct & remote installation
- Integral protected deluge seal
- Controlled outer 'load retention' seal
- Unique OSTG prevents over tightening
- -60°C to 85°C
- Globally marked, cCSAus, IECEX & ATEX
- Superior EMC performance
- Once any cable inner sheath/bedding has been removed, the RapidEx liquid resin barrier seals directly around the internal cable cores, completely eliminating any risk of coldflow on all cable types

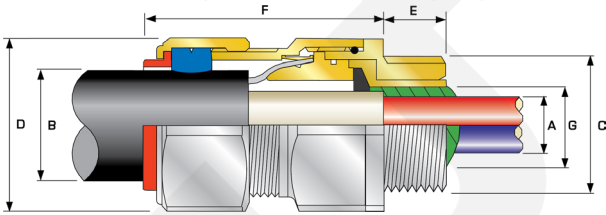


 IP66	 IP67	 IP68
 DELUGE PROTECTED	 EMC	 +85 °C ↑ -60 °C

Ex eb	Ex db	Ex ta	Ex nR
--------------	--------------	--------------	--------------

TECHNICAL CLASSIFICATION	
DESIGN SPECIFICATION	BS 6121:Part 1:1989, IEC 62444, EN 62444
MECHANICAL CLASSIFICATION*	Impact = Level 8, Cable Anchorage = Class D
ENCLOSURE PROTECTION	IK10 to IEC 62262 (20 joules) Brass & Stainless Steel only
ELECTRICAL CLASSIFICATION*	Category B
INGRESS PROTECTION RATING**	IP66, IP67 & IP68****
DELUGE PROTECTION COMPLIANCE	DTS01 : 91
CABLE TYPE	Single Wire Armour (SWA), Aluminium Wire Armour (AWA)***
ARMOUR CLAMPING	Detachable Resin Tube / Cone & AnyWay Universal Clamping Ring
SEAL MATERIAL	CMP SOLO LSF Halogen Free Thermoset Elastomer / RapidEx Barrier Compound
SEALING TECHNIQUE	Unique CMP 'LRS' Outer Seal (Load Retention Seal)
SEALING AREA(S)	RapidEx Resin Barrier & Cable Outer Sheath
CABLE GLAND MATERIAL	Electroless Nickel Plated Brass, Brass, Stainless Steel, Aluminium

* Mechanical & Electrical Classifications applied as per IEC 62444 & EN 62444 ** When CMP installation accessories are used. Refer to www.cmp-products.com for further information. ***Where the cable is permitted by code (NEC and/or CEC) **** IP68 tested to a minimum depth of 30 metres for 12 hours, alternate depths / durations can be provided upon request.



GLOBAL PRODUCT CERTIFICATION			
ATEX CERTIFICATE	CML18ATEX1325X, CML18ATEX4317X	IECEX CERTIFICATE	IECEX CML 18.0182X, IECEX SIM 14.0008X
CODE OF PROTECTION	⊕ II 2G 1D, Ex db IIC Gb, Ex eb IIC Gb, Ex ta IIC Da ⊕ II 3G Ex nR IIC Gc, ⊕ I M2 Ex db I Mb, Ex eb I Mb	CODE OF PROTECTION	Ex db IIC Gb, Ex eb IIC Gb, Ex nR IIC Gc, Ex ta IIC Da, Ex db I Mb, Ex eb I Mb
COMPLIANCE STANDARDS	EN 60079-0,1,7,15,31	COMPLIANCE STANDARDS	IEC 60079-0,1,7,15,31
cCSAus CERTIFICATE (20S16-100)	2288626		
CSAus CODE OF PROTECTION***	Class I, Div. 1, 2 Groups A, B, C and D; Class II, Div. 1, 2 Groups F and G; Class III, Div. 1 and 2; Type 4X: Oil Resistant II: Class I, Zone 1 AEx d IIC Gb, AEx e IIC Gb, Class I, Zone 2 AEx nR IIC Gc, Class I, Zone 20 AEx ta IIC Da		
cCSA CODE OF PROTECTION***	Class I, Div. 2 Groups A, B, C and D; Class II, Div. 2 Groups F and G; Class III, Div. 2; Type 4X: Oil Resistant II: Ex nR IIC Gc		
COMPLIANCE STANDARDS	CAN/CSA-C22.2 No 0,18,25,30,94,174, CAN/CSA-60079-0,1,7,31 CAN/CSA-IE612411 Part 11, ANSI/UL 514B Ed 5, ANSI/UL 50 Ed 11, ANSI/UL 2225 Ed 4, UL60079		
EAC CERTIFICATE	TC RU C-GB.AA87.B.00487	Ukr SEPPO	CL19.10371X
RETIE APPROVAL NUMBER	03866	CCOE / PESO (INDIA) CERTIFICATE	P444949
NEPSI CERTIFICATE	GY18.1252X	INMETRO APPROVAL	TUV 12.2073X
MARINE APPROVALS	LRS: 01/00172 DNV: TAE000000Y ABS: 14-LD234401A-4-PDA, BV: 43180 A1 BV		



PATENT GRANTED: ES 2287986, NO 2287986, TR 2287986, AU 2010284848, AU 2014274614, GB 2485114, SG 178839, US 8827027, US 9484133, US 9774178, MY 153846, US 10193321, US1034078

COMBINED ORDERING REFERENCE ("BRASS METRIC")			AVAILABLE ENTRY THREADS "C" (ALTERNATE METRIC THREAD LENGTHS AVAILABLE)				NUMBER OF CORES	DIAMETER OVER CONDUCTORS "A"	CABLE BEDDING DIAMETER "G"	OVERALL CABLE DIAMETER "B"			ARMOUR RANGE		ACROSS FLATS "D"	ACROSS CORNERS "D"	PROTRUSION LENGTH "F"	SHROUD	CABLE GLAND WEIGHT (Kgs)
			STANDARD	OPTION	MAX	MIN				MAX	MIN	MAX							
SIZE	TYPE	ORDERING SUFFIX	METRIC	THREAD LENGTH (METRIC) "E"	NPT	THREAD LENGTH (NPT) "E"	NPT	MAX	MIN	MAX	MIN	MAX	MIN	MAX	MAX	MAX			
20S16	PX2KWREX	1RA	M20	15.0	1/2"	0.78	3/4"	21	11.7	11.7	6.1	13.1	0.8	1.25	30.5	33.6	62.0	PVC06	0.24
20S	PX2KWREX	1RA	M20	15.0	1/2"	0.78	3/4"	21	11.7	11.7	9.5	15.9	0.8	1.25	30.5	33.6	62.0	PVC06	0.23
20	PX2KWREX	1RA	M20	15.0	1/2"	0.78	3/4"	21	12.6	12.9	12.5	20.9	0.8	1.25	30.5	33.6	63.0	PVC06	0.24
25S	PX2KWREX	1RA	M25	15.0	3/4"	0.80	1"	30	17.5	17.9	14.0	22.0	1.25	1.6	37.5	41.3	69.5	PVC09	0.37
25	PX2KWREX	1RA	M25	15.0	3/4"	0.80	1"	30	17.5	17.9	18.2	26.2	1.25	1.6	37.5	41.3	69.5	PVC09	0.37
32	PX2KWREX	1RA	M32	15.0	1"	0.98	1 1/4"	50	23.6	23.9	23.7	33.9	1.6	2.0	46.0	50.6	75.0	PVC11	0.57
40	PX2KWREX	1RA	M40	15.0	1 1/4"	1.01	1 1/2"	59	30.0	30.3	27.9	40.4	1.6	2.0	55.0	60.5	75.0	PVC15	0.80
50S	PX2KWREX	1RA	M50	15.0	1 1/2"	1.03	2"	89	36.6	36.9	35.2	46.7	2.0	2.5	60.0	66.0	77.0	PVC18	0.90
50	PX2KWREX	1RA	M50	15.0	2"	1.06	2 1/2"	115	41.0	41.3	40.4	53.0	2.0	2.5	70.1	77.1	77.0	PVC21	1.19
63S	PX2KWREX	1RA	M63	15.0	2"	1.06	2 1/2"	115	47.9	47.8	45.6	59.4	2.0	2.5	75.0	82.5	79.7	PVC23	1.39
63	PX2KWREX	1RA	M63	15.0	2 1/2"	1.57	3"	115	53.7	54.0	54.6	65.8	2.0	2.5	80.0	88.0	80.3	PVC25	1.41
75S	PX2KWREX	1RA	M75	15.0	2 1/2"	1.57	3"	140	59.9	60.2	59.0	72.0	2.0	2.5	90.0	99.0	86.8	PVC28	2.09
75	PX2KWREX	1RA	M75	15.0	3"	1.63	3 1/2"	140	64.2	64.2	66.7	78.4	2.5	3.0	100.0	110.0	88.3	PVC30	2.54
90	PX2KWREX	1RA	M90	24.0	3 1/2"	1.69	4"	140	75.3	75.6	76.2	90.3	3.15	4.0	115.0	126.5	102.1	PVC32	3.71
100	PX2KWREX	1RA	M100	24.0	3 1/2"	1.69	4"	200	85.6	85.9	86.1	101.4	3.15	4.0	127.0	139.7	114.0	LSF33	4.81

*For material options add the following suffix to the Ordering Reference; Brass (no suffix required), Nickel Plated Brass '5', 316 Grade Stainless Steel '4', Copper Free Aluminium '1'

For NPT options please add the following digits to the material suffix; 1/2" = 31, 3/4" = 32, 1" = 33, 1 1/4" = 34, 1 1/2" = 35, 2" = 36, 2 1/2" = 37, 3" = 38, 3 1/2" = 39, 4" = 310 (Brass requires prefix "0")

Examples: 32PX2KWREX1RA534 = Nickel Plated Brass 1 1/4" NPT, 50SPX2KWREX1RA035 = Brass 1 1/2" NPT, 25PX2KWREX1RA432 = Stainless Steel 3/4" NPT, 20PX2KWREX1RA5 = Nickel Plated Brass M20

Dimensions are displayed in millimetres unless otherwise stated

Dimensions listed are for metric cable glands only. Dimensions for alternative threads may vary, please see supplementary technical data sheet.