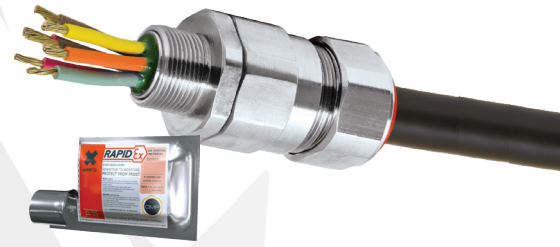


PX2KPBREX RAPIDEx

PX2KPBREX INTERNATIONALLY APPROVED, EXPLOSIVE ATMOSPHERE RAPIDEX BARRIER CABLE GLAND

FOR ALL TYPES OF LEAD SHEATHED ARMoured CABLES

- Effectively earths / grounds lead sheathed cables
- RapidEx liquid pour sealing system
 - Enhances reliability, reduces risk
 - Reduces man hours
 - Reduces cost
- Metal-to-metal armour clamping
- Direct & remote installation
- Integral protected deluge seal
- Controlled outer 'load retention' seal
- Unique OSTG prevents overtightening
- 60°C to +85°C
- Internationally marked, IECEx & ATEX
- Superior EMC performance
- Once any cable inner sheath/bedding has been removed, the RapidEx liquid resin barrier seals directly around the internal cable cores, completely eliminating any risk of coldflow on all cable types



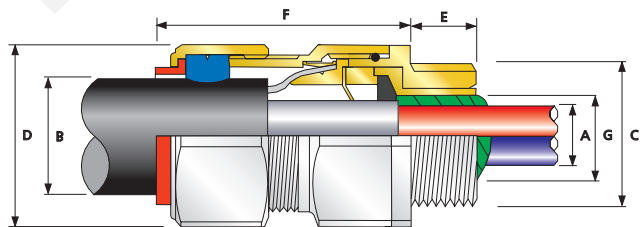
IP66	IP67	IP68
DELUGE PROTECTED	EMC	+85 °C ↑ -60 °C
Ex eb	Ex db	Ex ta Ex nR

TECHNICAL CLASSIFICATION	
DESIGN SPECIFICATION	BS 6121:Part 1:1989, IEC 62444, EN 62444
MECHANICAL CLASSIFICATION*	Impact=Level 8, Cable Anchorage=Class D
ENCLOSURE PROTECTION	IK10 to IEC 62262 (20 joules) Brass & Stainless Steel only
ELECTRICAL CLASSIFICATION*	Category B (Category A when used with braid, tape or pliable wire armour cables)
INGRESS PROTECTION RATING**	IP66, IP67 & IP68***
DELUGE PROTECTION COMPLIANCE	DTS01 : 91
CABLE TYPE	Lead Sheathed & Single Wire Armour (LC/SWA), Lead Sheathed & Aluminium Wire Armour (LC/AWA), Lead Sheathed & Wire Braid Armour (LC/SWB), Lead Sheathed & Pliable Wire Armour (LC/PWA), Lead Sheathed & Steel Tape Armour (LC/STA), Lead Sheathed & Aluminium Strip Armour (LC/ASA)
ARMOUR CLAMPING	Detachable Compound Tube / Cone & AnyWay Universal Clamping Ring
SEAL MATERIAL	CMP SOLO LSF Halogen Free Thermoset Elastomer / RapidEx Barrier Compound
SEALING TECHNIQUE	Unique CMP 'LRS' Outer Seal (Load Retention Seal)
SEALING AREA(S)	Inner Compound Barrier & Outer Sheath
CABLE GLAND MATERIAL	Brass, Electroless Nickel Plated Brass, Stainless Steel, Aluminium

* Mechanical & Electrical Classifications applied as per IEC 62444 & EN 62444 ** When CMP installation accessories are used. Refer to www.cmp-products.com for further information. *** IP68 tested to a minimum depth of 30 metres for 12 hours, alternate depths / durations can be provided upon request

PATENT GRANTED: ES 2287986, NO 2287986, TR 2287986, AU 2010284848, AU 2014274614, GB 2485114, SG 178839, US 8872027, US 9484133, US 9774178, MY 153846, US 10193321, US1034078

GLOBAL PRODUCT CERTIFICATION			
ATEX CERTIFICATE	CML18ATEX1325X, CML18ATEX4317X	IECEx CERTIFICATE	IECEx CML 18.0182X, IECEx SIM 14.0008X
CODE OF PROTECTION	⊕ II 2G TD, Ex db IIC Gb, Ex eb IIC Gb, Ex ta IIIC Da, ⊕ II 3G Ex nR IIC Gc, ⊕ I M2 Ex db I Mb, Ex eb I Mb	CODE OF PROTECTION	Ex db IIC Gb, Ex eb IIC Gb, Ex nR IIC Gc, Ex ta IIIC Da, Ex db I Mb, Ex eb I Mb
COMPLIANCE STANDARDS	EN 60079-0, 1, 7, 15, 31	COMPLIANCE STANDARDS	IEC 60079-0, 1, 7, 15, 31
UKrSEPRO	CLQ 19.0371X		
RETIE APPROVAL NUMBER	03866	CCOE / PESO (INDIA) CERTIFICATE	P444949
NEPSI CERTIFICATE	GYJ18.1252X	INMETRO APPROVAL	TUV 12.2073X
MARINE APPROVALS	LRS: 01/00172 DNV: E-13848 ABS: 14-LD234401A-4-PDA, BV: 43180 A1 BV		



* Grooved Cone (X) is predominantly used for Wire Braid (e.g. GSWB, TCWB), Steel Tape Armour (STA, DSTA) and Aluminium Strip Armour (ASA) but is also suitable for Single Wire Armour (SWA), Aluminium Wire Armour (AWA) and Pliable Wire Armour (PWA) if the range is outside that of the Stepped Cone (W). Grooved Cone (X) dimensions shown in the Cable Gland Selection Table below are for a double wire strand of braid armour cables. Tapes can also be doubled over. For cables that have only a single layer of armour such as SWA, the clamping range should be used as shown in the table below. Stepped (W) Cone is suitable for Single Wire Armour (SWA), or Aluminium Wire Armour (AWA) cables.

COMBINED ORDERING REFERENCE ("BRASS METRIC")			AVAILABLE SINGLE THREADS** ("C" (ALTERNATE METRIC THREAD LENGTHS AVAILABLE)					NUMBER OF CORES	DIAMETER OVER CONDUCTORS "A"	LEAD SHEATH DIAMETER "G"		OVERALL CABLE DIAMETER "B"		ARMOUR RANGE †				ACROSS FLATS "D"	ACROSS CORNERS "D"	PROTRUSION LENGTH "F"	SHROUD	CABLE GLAND WEIGHT (kgs)	
			STANDARD		OPTION					MIN	MAX	MIN	MAX	GROOVED CONE (X)		STEPPED CONE (W)							
SIZE	TYPE	ORDERING SUFFIX	METRIC	THREAD LENGTH (METRIC "E")	NPT	THREAD LENGTH (NPT) "E"	NPT	MAX	MAX	MIN	MAX	MIN	MAX	MIN	MAX	MIN	MAX	MIN	MAX	MAX	MAX		
20S16	PX2KPBREX	1RA	M20	15.0	1/2"	19.9	3/4"	21	7.8	3.1	7.8	6.1	13.1	0.3	1.0	0.8	1.25	30.5	33.6	62.0	PVC06	0.25	
20S	PX2KPBREX	1RA	M20	15.0	1/2"	19.9	3/4"	21	11.0	6.1	11.0	9.5	15.9	0.3	1.0	0.8	1.25	30.5	33.6	62.0	PVC06	0.23	
20	PX2KPBREX	1RA	M20	15.0	1/2"	19.9	3/4"	21	12.6	6.5	13.4	12.5	20.9	0.4	1.0	0.8	1.25	30.5	33.6	63.0	PVC06	0.24	
25S	PX2KPBREX	1RA	M25	15.0	3/4"	20.2	1"	30	17.5	11.1	19.3	14.0	22.0	0.4	1.2	1.25	1.6	37.5	41.3	69.5	PVC09	0.37	
25	PX2KPBREX	1RA	M25	15.0	3/4"	20.2	1"	30	17.5	11.1	19.3	18.2	26.2	0.4	1.2	1.25	1.6	37.5	41.3	69.5	PVC09	0.37	
32	PX2KPBREX	1RA	M32	15.0	1"	25.0	1 1/4"	50	23.6	17.0	25.5	23.7	33.9	0.4	1.2	1.6	2.0	46.0	50.6	75.0	PVC11	0.57	
40	PX2KPBREX	1RA	M40	15.0	1 1/4"	25.6	1 1/2"	59	27.9	22.0	31.2	27.9	40.4	0.4	1.6	1.6	2.0	55.0	60.5	75.0	PVC15	0.80	
50S	PX2KPBREX	1RA	M50	15.0	1 1/2"	26.1	2"	89	35.2	29.5	37.2	35.2	46.7	0.4	1.6	2.0	2.5	60.0	66.0	77.0	PVC18	0.90	
50	PX2KPBREX	1RA	M50	15.0	2"	26.9	2 1/2"	115	40.4	35.6	42.6	40.4	53.0	0.6	1.6	2.0	2.5	70.0	77.0	77.0	PVC21	1.19	
63S	PX2KPBREX	1RA	M63	15.0	2"	26.9	2 1/2"	115	45.6	40.1	48.5	45.6	59.4	0.6	1.6	2.0	2.5	75.0	82.5	79.7	PVC23	1.41	
63	PX2KPBREX	1RA	M63	15.0	2 1/2"	39.9	3"	115	53.7	47.2	54.2	54.6	65.8	0.6	1.6	2.0	2.5	80.0	88.0	80.3	PVC25	1.44	
75S	PX2KPBREX	1RA	M75	15.0	2 1/2"	39.9	3"	140	59.0	52.8	60.2	59.0	72.0	0.6	1.6	2.0	2.5	90.0	99.0	86.8	PVC28	2.13	
75	PX2KPBREX	1RA	M75	15.0	3"	41.5	3 1/2"	140	64.2	59.1	65.2	66.7	78.4	0.6	1.6	2.5	3.0	100.0	110.0	88.3	PVC30	2.57	
90	PX2KPBREX	1RA	M90	24.0	3 1/2"	42.8	4"	140	75.3	66.6	77.1	76.2	90.3	0.8	1.6	3.15	4.0	115.0	126.5	102.1	PVC32	3.75	
100	PX2KPBREX	1RA	M100	24.0	3 1/2"	42.8	4"	200	85.6	76.0	88.1	86.1	101.4	0.8	1.6	3.15	4.0	127.0	139.7	114.0	LSF33	4.87	

**For material options add the following suffix to the Ordering Reference; Brass (no suffix required); Nickel Plated Brass '5'; 316 Grade Stainless Steel '4'; Copper Free Aluminium '1'

For NPT options add the following digits to the material suffix; 1/2" = 31; 3/4" = 32; 1" = 33; 1 1/4" = 34; 1 1/2" = 35; 2" = 36; 2 1/2" = 37; 3" = 38; 3 1/2" = 39; 4" = 310 (Brass requires prefix '0')

Examples: 32PX2KPBREX1RA534 = Nickel Plated Brass 1 1/4" NPT, 50SPX2KPBREX1RA035 = Brass 1 1/2" NPT, 25PX2KPBREX1RA432 = Stainless Steel 3/4" NPT, 20PX2KPBREX1RA5 = Nickel Plated Brass M20

Dimensions are displayed in millimetres unless otherwise stated

Dimensions listed are for metric cable glands only. Dimensions for alternative threads may vary, please see supplementary technical data sheet.