

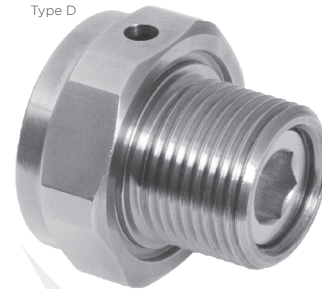
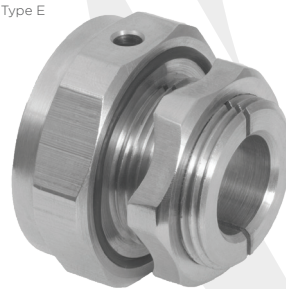
781

781 BREATHER / DRAIN PLUG, GLOBALLY APPROVED, EXPLOSIVE ATMOSPHERE CABLE / CONDUIT ACCESSORY

- 781E for Ex e use
- 781D for Ex d use
- Drains equipment susceptible to moisture collection
- Enables equipment to breathe
- General purpose / industrial version available
- Nylon Ex e only version available (-20°C to +60°C)
- -60°C to 130°C (metallic versions)
- Globally marked, IECEx, ATEX & cCSAus

Type E

Type D



IP66

+130°C
↑
-60°C

Ex eb

Ex db

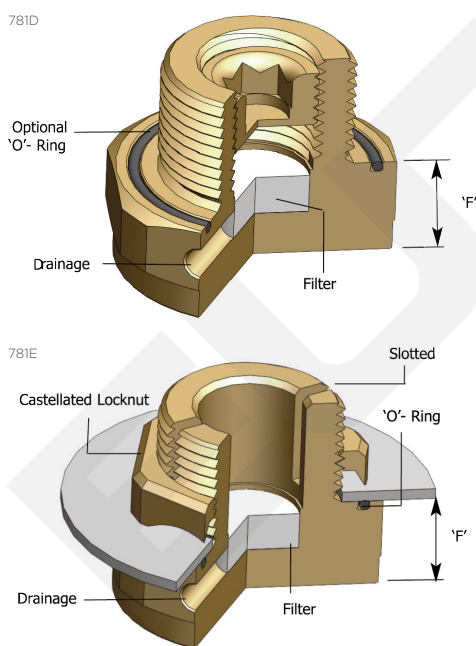
Ex ta

TECHNICAL CLASSIFICATION

DESIGN SPECIFICATION	BS 6121:Part 1:1989
ENCLOSURE PROTECTION	IK10 to IEC 62262 (20 joules) Brass & Stainless Steel Only
INGRESS PROTECTION RATING**	781D: IP66 (when fitted with CMP sealing accessories) 781E: IP66 (with 'O' ring interface seal and lock nut as standard)
AVAILABLE MATERIALS	Brass, Nickel Plated Brass, Aluminium, Stainless Steel, Nylon (781E only)
CONTINUOUS OPERATING TEMPERATURE	781D: -60°C to +130°C 781E: -60°C to +130°C (-20°C to +60°C Nylon)
ACCESSORIES INCLUDED (781E ONLY)	Integral Entry Thread equipment interface 'O' ring seal, Castellated Locknut

** When CMP installation accessories are used (781E). Refer to www.cmp-products.com for further information.

The 781D can be used with enclosures up to 30 litres for group IIB gases and enclosures up to 2.5 litres for group IIC gases



GLOBAL PRODUCT CERTIFICATION

ATEX CERTIFICATE	CML 18ATEX1330U	IECEx CERTIFICATE	IECEx CML 18.0187U
CODE OF PROTECTION	781D: Ex db IIC Gb, Ex ta IIC Da 781E: Ex eb IIC Gb, Ex ta IIC Da	CODE OF PROTECTION	781D: Ex db IIC Gb, Ex ta IIC Da 781E: Ex eb IIC Gb, Ex ta IIC Da
COMPLIANCE STANDARDS	EN 60079-0,1,7,31	COMPLIANCE STANDARDS	IEC 60079-0,1,7,31
cCSAus CERTIFICATE (20S16-100)	1055233	UL CERTIFICATE	E253914
CODE OF PROTECTION	781D: Ex d IIC, Class I, Zone 1 AEx d IIC; Class I Div 1, Groups A,B,C,D, Enclosure Type 4X 781E: Ex e II, Class I, Zone 1, AEx e II, Enclosure Type 4X	CODE OF PROTECTION	781D: Class I, Zone 1, AEx d IIB or IIC; Zone 20, AEx ta IIC 781E: Class I, Zone 1, AEx e IIC
COMPLIANCE STANDARDS	CSA C22.2 No 0-10, 0.5, 30, 94; CSA C22.2 60079-0,1,7, F61241-1-1, UL50, 1203, UL60079-0,1,7	COMPLIANCE STANDARDS	UL 60079-0, 1, 7, 31
EAC CERTIFICATE	TC RU C-GB.AA87.B.00487	UK+SEPRO	CLQ 19.0370U
RETIE APPROVAL NUMBER	03866	CCOE / PESO (INDIA) CERTIFICATE	P444949
INPSI CERTIFICATE	GVJ18.1248U	INMETRO APPROVAL	TUV 12.1330U
ECAS CERTIFICATE	20-02-05264		
MARINE APPROVALS	LRS: 01/00173	KCS CERTIFICATE	781E: 19-AV4BO-0255X, 781D: 19-AV4BO-0254X

HOW TO ORDER

e.g. 781 - D - M - 3 = Ex d - M25

e.g. 781 - E - M - 3 = Ex e - M25

Other thread variations are available on request. For further information on ordering please refer to page 163.

The CMP 781E range of Increased Safety type 'e' breather / drain plugs have been tested together with CMP serrated washers to ensure that in areas that are subject to vibration the plug does not suffer from self-loosening and inadvertently fall out of the enclosure. Serrated washers are not included as standard but can be ordered separately.

PRODUCT SELECTION TABLE

ORDERING REFERENCE (781D)	ORDERING REFERENCE (781E)	THREAD SIZE	MINIMUM THREAD LENGTH	PROTRUSION LENGTH "F"	ACROSS FLATS DIMENSION	ACROSS CORNERS DIMENSIONS	MAX INSTALLATION TORQUE (NM)
781DM2	781EM2	M20 x 1.5	15.0	12.7	30.0	33.0	7
781DM3	781EM3	M25 x 1.5	15.0	12.7	36.0	39.6	10
781DT1	781ET1	½" NPT	19.9	12.7	30.0	33.0	7
781DT2	781ET2	¾" NPT	20.2	12.7	36.0	39.6	10

All dimensions shown are in millimetres unless otherwise stated